

USB Adapter

For Windows 98/ME/2000/XP

Driver Installation Under Windows 98/ME/2000/XP

1. **Step 1:** **Don't** Plug in the USB type A receptacle of the cable to the USB connector of your computer.

Step 2: Place the enclosed CD Driver into the CD ROM. to search for “PL-2303 Driver Installer”

Step 3: Click “PL-2303 Driver Installer ”



Figure 1

2. Select ‘ Search for the best driver for your device’ and click “next”. See Figure 2.

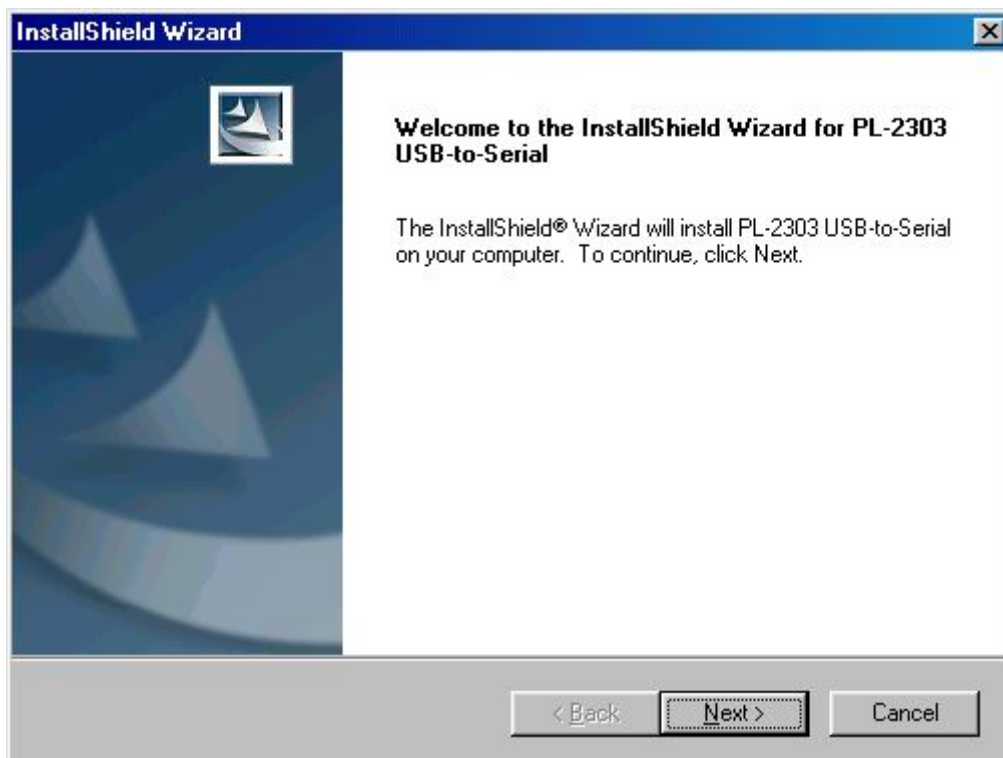


Figure 2

3. Windows has finished installing the software, click “Finish” to close the Wizard. See Figure 3

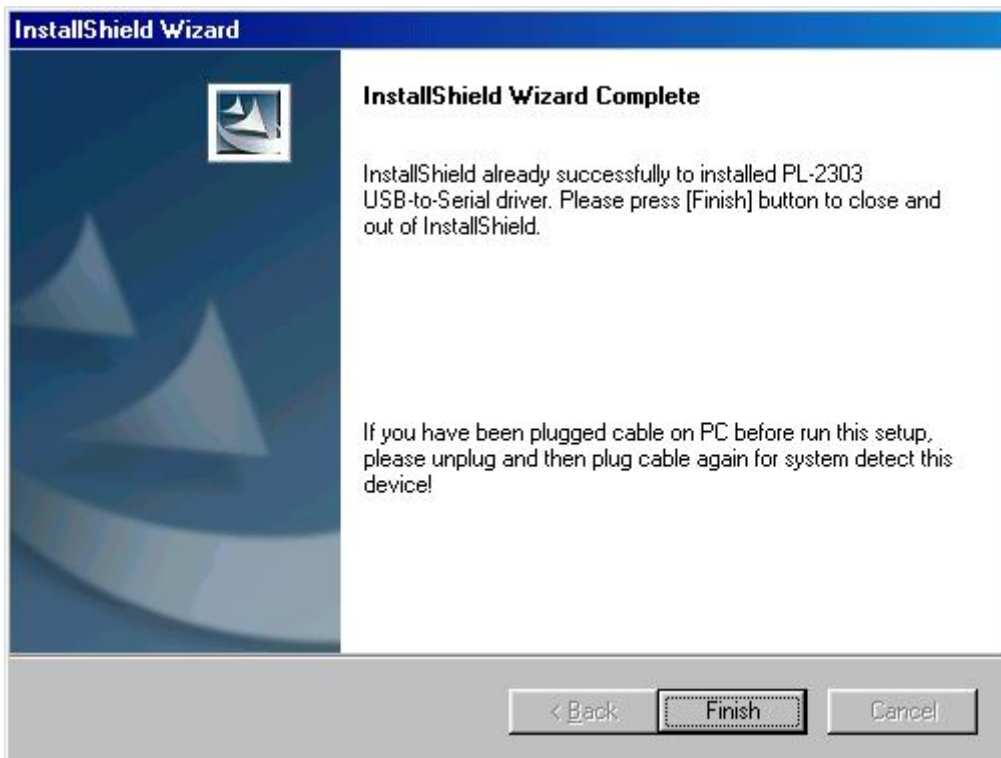


Figure 3

4. **Plug USB/Serial cable into your computer's USB port.**
5. Open "Device Manager" under System Properties and check if there is the device you install under "USB to Serial (COM3)".See Figure 4

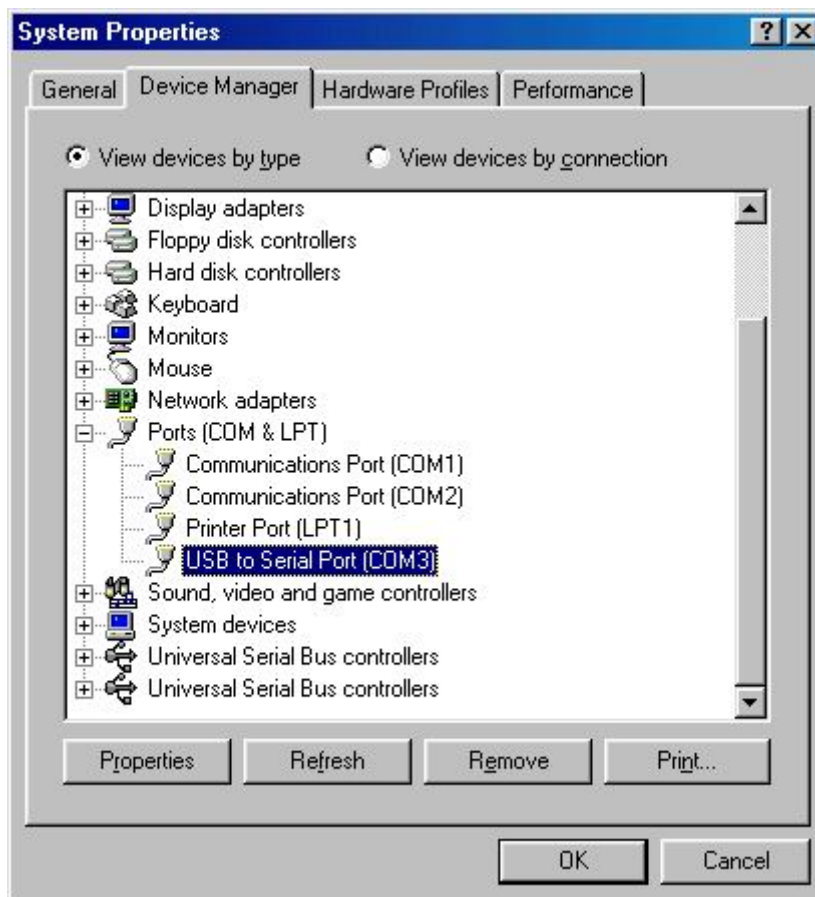


Figure 4